

# Atelier Ten

Environmental Design Consultants and Lighting Designers





**A legacy of positive change**

**Collaborative approach**

**Enlightened perspective on the built environment**



## Greatest Hits



Kroon Hall, Yale University



Novartis Institutes for BioMedical Research



SFMOMA Expansion

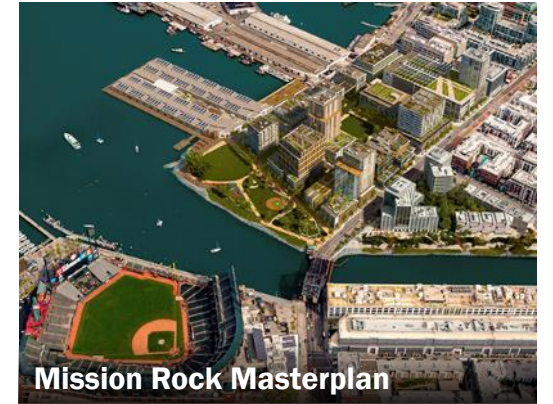


NVIDIA Endeavor



Frick Environmental Center

Our 'greatest hits' includes work across the United States including masterplans, higher education, commercial office buildings, healthcare, labs, museums, and transit infrastructure.



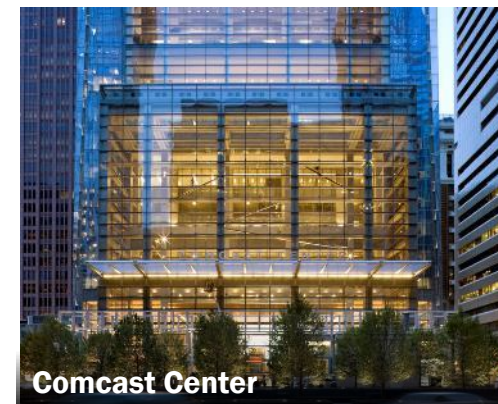
Mission Rock Masterplan



Salesforce Transit Center



Arizona Cancer Center



Comcast Center



Grogan & Dove Federal Building



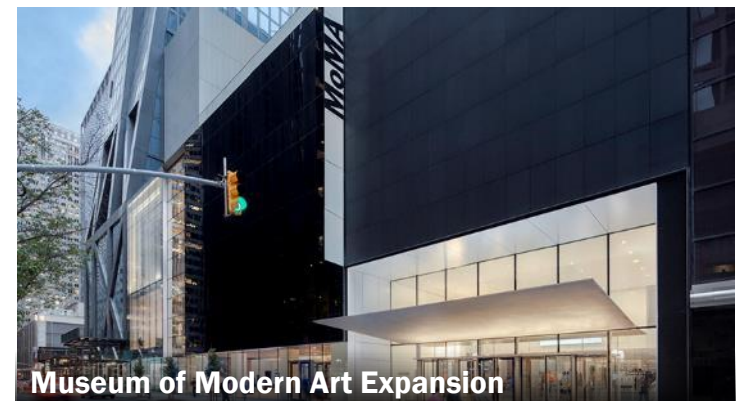
## Latest & Greatest



Memorial Sloan Kettering Cancer Center



Uber Mission Bay Headquarters



Museum of Modern Art Expansion



University of California, Merced 2020 Campus



Zhuhai Jiuzhou Bay



Obama Presidential Library



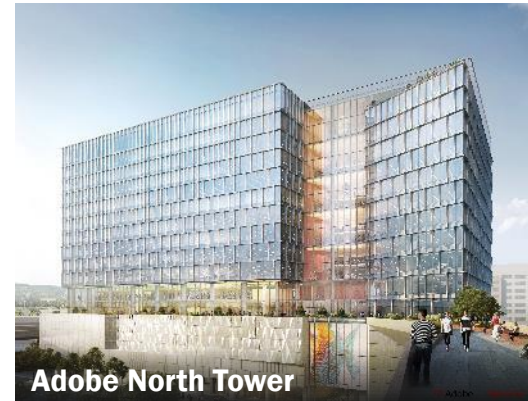
UMass Amherst Design Building



Academy Museum of Motion Pictures



Harvard Ruth Mulan Chu Chao Center



Adobe North Tower

Our latest work includes a strong focus on carbon (operational, embodied & landscape), existing building renovations, tech headquarters, and higher education.



# In the Northeast



MOYNIHAN TRAIN HALL, NEW YORK, NY



UMASS DESIGN BUILDING, AMHERST, MA



181 MERCER STREET, NEW YORK UNIVERSITY, NEW YORK, NY



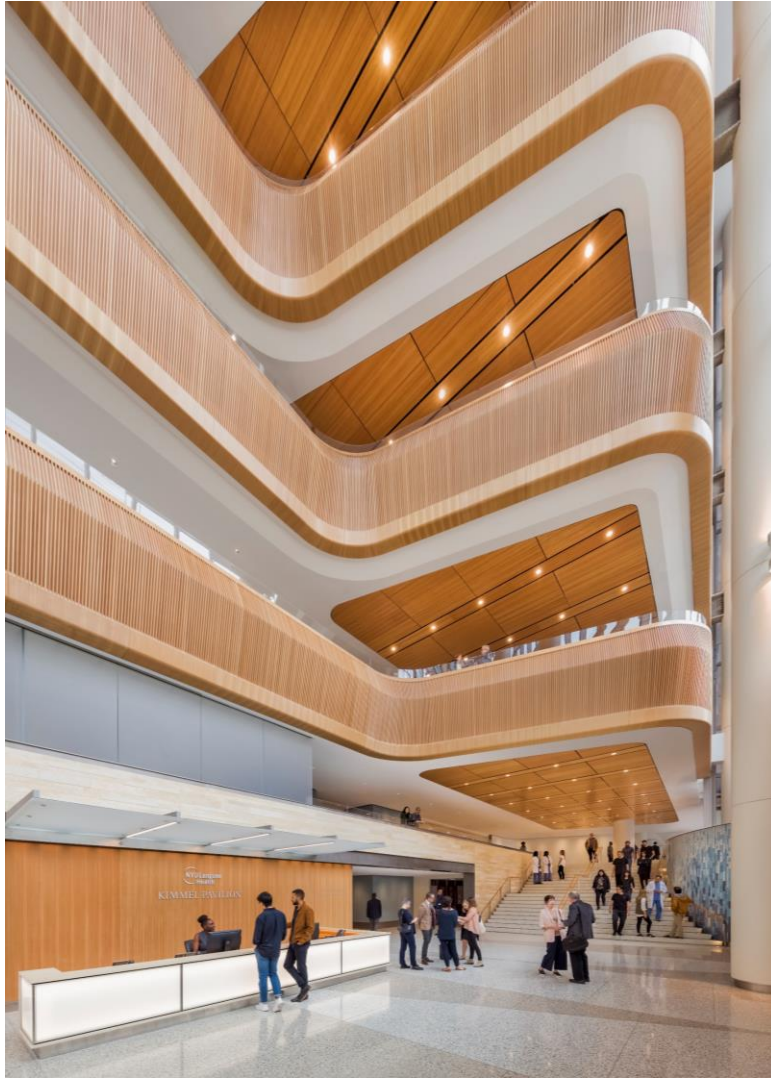
COMCAST INNOVATION CENTER, PHILADELPHIA, PA



4 HUDSON SQUARE, NEW YORK, NY



## In the Northeast



HELEN L. & MARTIN S. KIMMEL PAVILION, NEW YORK, NY



BENTON HALL, COLGATE UNIVERSITY, HAMILTON, NY



SCHOOL OF LAW RENOVATION AND ADDITION, BOSTON UNIVERSITY, MA



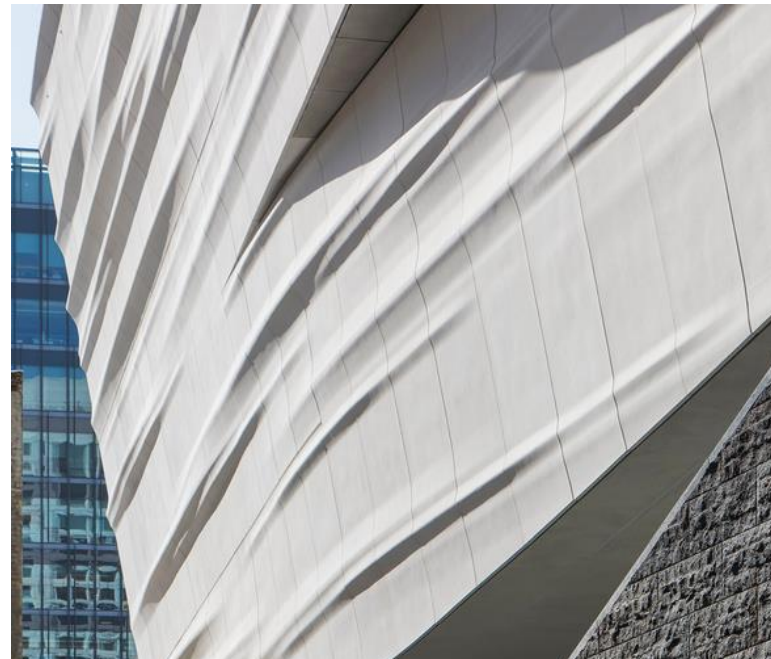
RONALD O. PERELMAN CENTER FOR POLITICAL SCIENCE AND ECONOMICS, UNIVERSITY OF PENNSYLVANIA, PA

*“Atelier Ten is a proud sponsor of this year’s Northeast Summit for a Sustainable Built Environment.*

*In the United States, buildings account for approximately 40% of the total greenhouse gas emissions and we have less than a decade to prevent irreversible damage from climate change. Events like this provide the opportunity to share and learn from a larger community of designers and engineers, in the hopes that our industry can quickly tackle this critical issue.”*

*-Larry Jones, Associate Director  
New York*





# atelier ten

## East Coast

### NEW YORK

104 West 29th Street, 8th Fl  
New York NY 10001  
T +1 (212) 254 450011

### NEW HAVEN

798 Chapel Street  
New Haven CT 06510  
T +1 (203) 777 1400

### SAN FRANCISCO

443 Tehama Street, 1st Fl  
San Francisco CA 94103  
T +1 (415) 351 2100

ENVIRONMENTAL DESIGN  
CONSULTANTS + LIGHTING DESIGNERS  
[atelierten.com](http://atelierten.com)